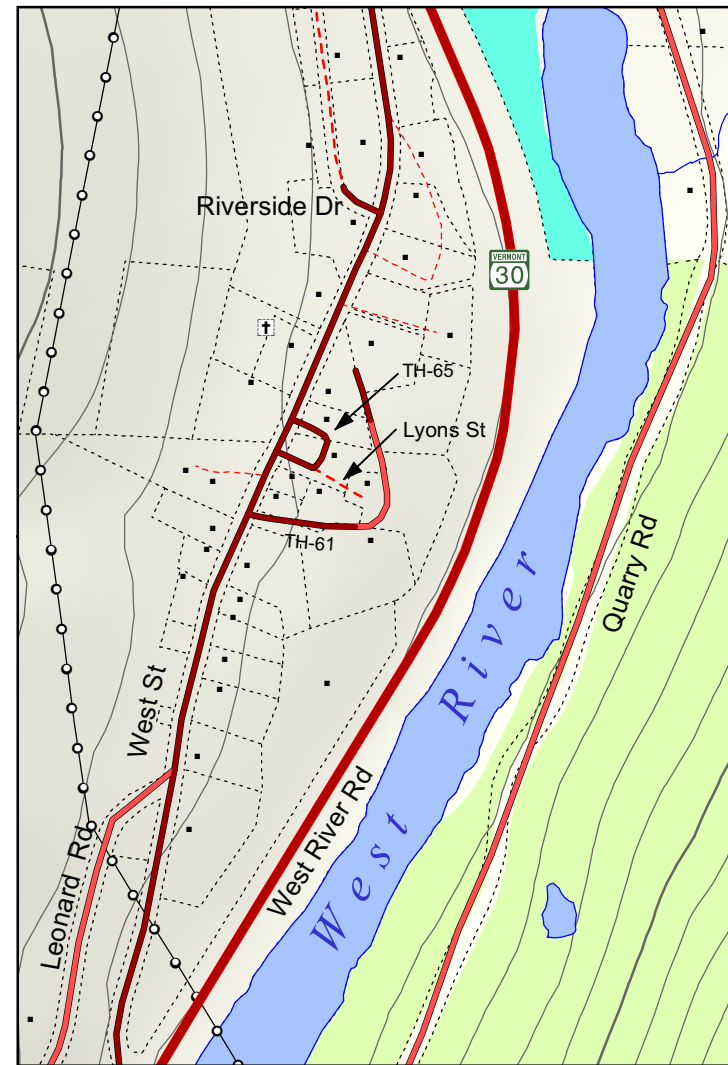
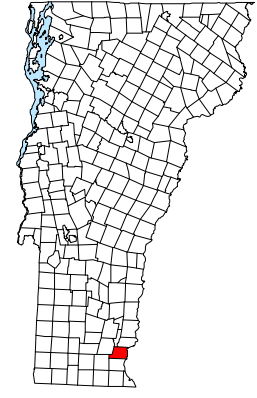


Topographic base map of the Town of Dummerston, Vt.

May 2009



West Dummerston Inset
Inset scale 1:6,000

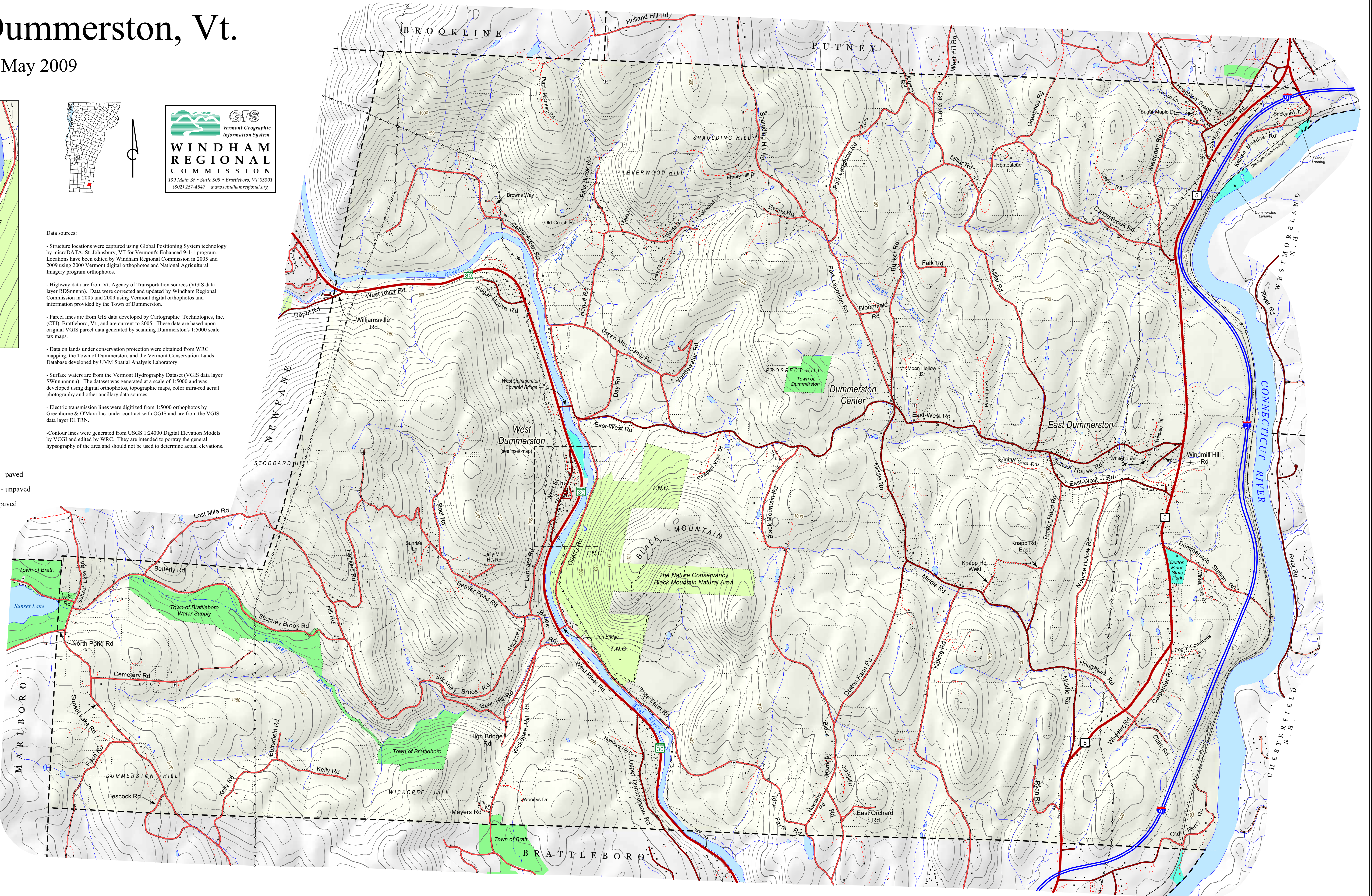


Data sources:

- Structure locations were captured using Global Positioning System technology by microDATA, St. Johnsbury, VT for Vermont's Enhanced 9-1-1 program. Locations have been edited by Windham Regional Commission in 2005 and 2009 using 2000 Vermont digital orthophotos and National Agricultural Imagery program orthophotos.
- Highway data are from Vt. Agency of Transportation sources (VGIS data layer RDSmmmm). Data were corrected and updated by Windham Regional Commission in 2005 and 2009 using Vermont digital orthophotos and information provided by the Town of Dummerston.
- Parcel lines are from GIS data developed by Cartographic Technologies, Inc. (CTI), Brattleboro, Vt., and are current to 2005. These data are based upon original VGIS parcel data generated by scanning Dummerston's 1:5000 scale tax maps.
- Data on lands under conservation protection were obtained from WRC mapping, the Town of Dummerston, and the Vermont Conservation Lands Database developed by UVM Spatial Analysis Laboratory.
- Surface waters are from the Vermont Hydrography Dataset (VGIS data layer SWmmmm). The dataset was generated at a scale of 1:5000 and was developed using digital orthophotos, topographic maps, color infra-red aerial photography and other ancillary data sources.
- Electric transmission lines were digitized from 1:5000 orthophotos by Greenhome & OMara Inc. under contract with OGIS and are from the VGIS data layer ELTRN.
- Contour lines were generated from USGS 1:24000 Digital Elevation Models by VCGI and edited by WRC. They are intended to portray the general hypsography of the area and should not be used to determine actual elevations.

LEGEND

- Structure
- Cemetery
- US or State Highway
- Interstate Highway
- Class 2 or 3 town highway - paved
- Class 2 or 3 town highway - unpaved
- Class 4 town highway - unpaved
- Legal Town Trail
- Private road/drive
- Railroad
- Trail
- Town boundary
- Parcel boundary
- Driveway
- Electric transmission line
- 50-foot contours
- Stream
- River or pond
- Conservation organization land (The Nature Conservancy)
- Town land
- State land



2,000 0 2,000 4,000 6,000 Feet

0.5 0 0.5 1 1.5 Miles

scale: 1:18,000 1 inch = 1500 feet