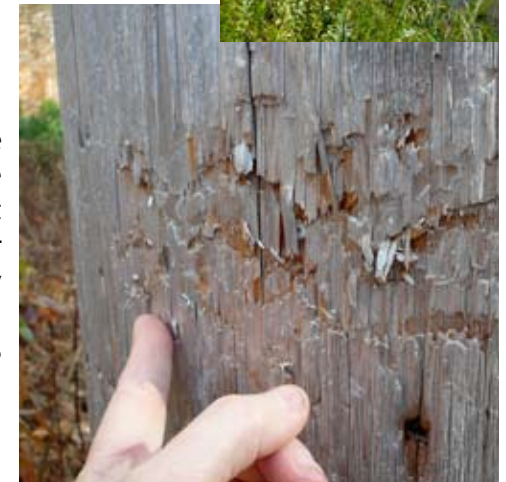
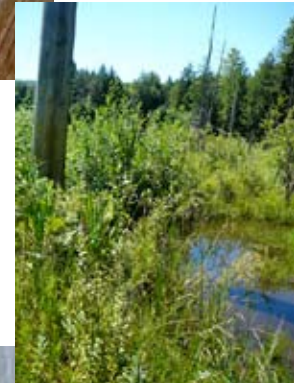
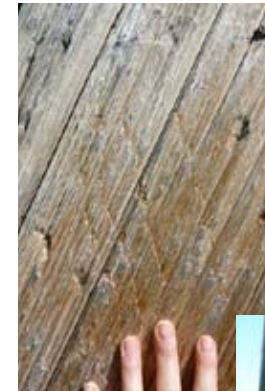
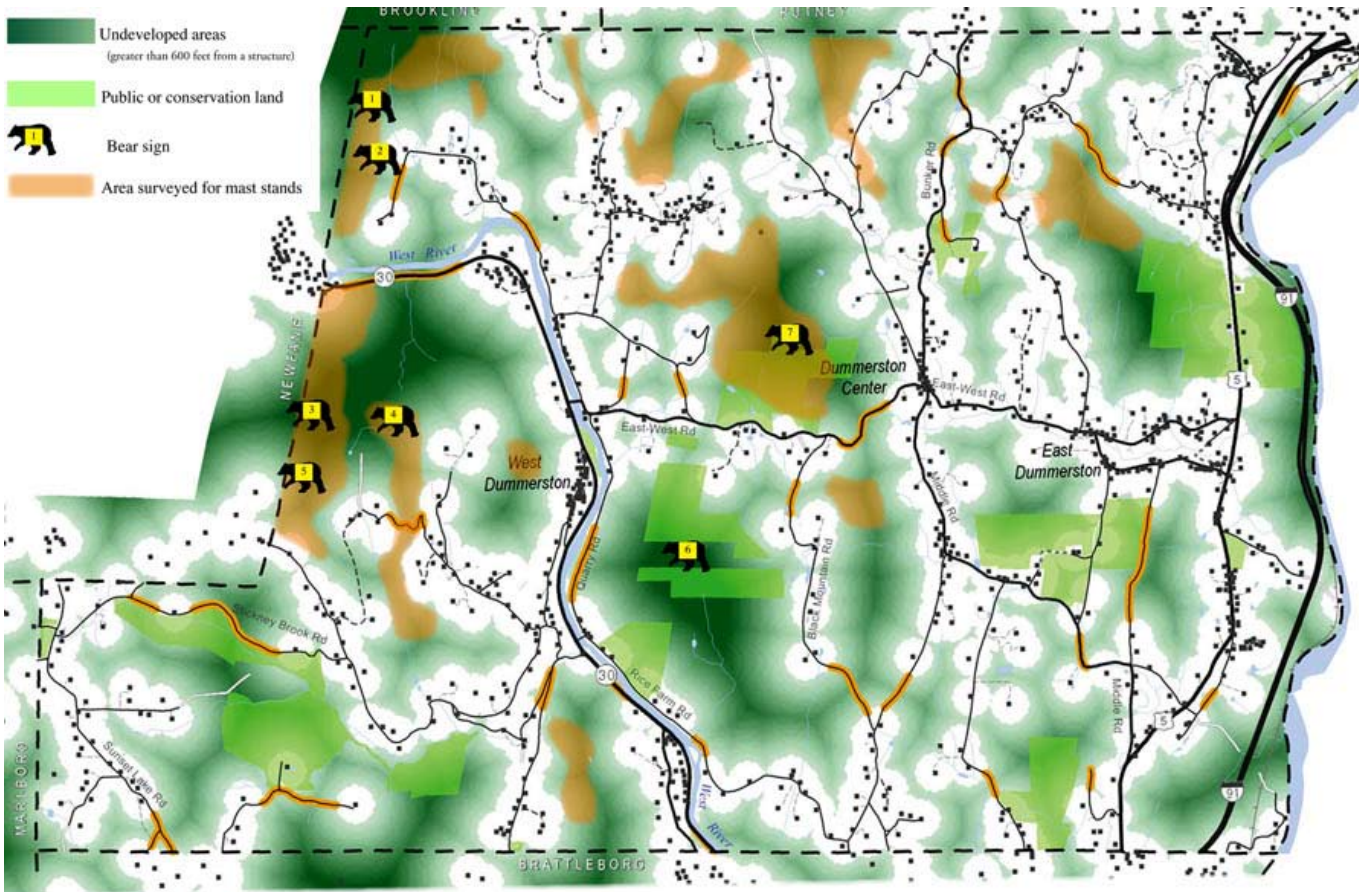


# Dummerston Mast Stand and Bear Sign Survey



**Northwest Powerline**  
 Several powerline poles had been clawed and bitten by bears.



In a survey of beech stands in remote sections of contiguous forest, no mast stands were found. All beeches were checked in likely stands, and individual beeches were checked when encountered. In three cases scarred trees were found. Since a minimum of 10 trees within a stand must show claw marks to be considered a significant bear mast stand, none of these stands qualify. This was most surprising along the very beechy slopes in the northwest corner of town, which is well connected to undeveloped lands in Brookline, Newfane, and Putney and often well away from human disturbance.

In the course of this survey, other bear sign was discovered and recorded below. All sights recorded have been GIS mapped.

# Dummerston Mast Stand and Bear Sign Survey



## Stoddard Hill Powerline

Power poles had been scarred by bears near the summit of Stoddard hill. During the late summer there was also evidence of bears feeding on raspberries in the powerline right-of-way. One beech had been climbed by bears at the edge of the powerline, but that was more than five years ago.



## Stoddard Hill Beeches

Two trees had been climbed in this large stand of mature beech. Both had been actively used in the fall of 2006, with an impressive "nest" in one beech.



# Dummerston Mast Stand and Bear Sign Survey



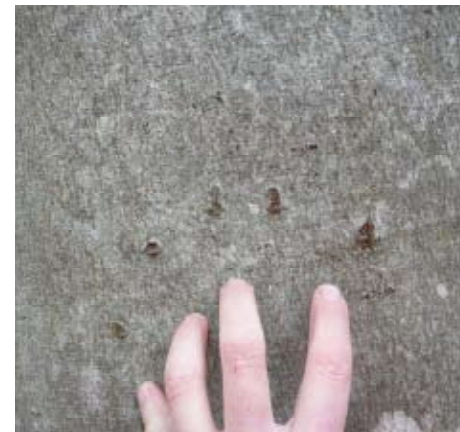
## Prospect Mountain

Three beeches had been climbed in this large stand.



## Stoddard Hill Foraging

While no beeches were scarred on this section of the mountain, a bear had been feeding on jack-in-the-pulpits in the summer of 2007.



## Black Mountain

This area still needs to be surveyed. One scarred beech is known to occur in the "bowl" of Black Mountain

