

Bedrock Formations

From Geologic Map of the Brattleboro Quadrangle, Vermont Geological Survey, J.C. Hepburn, N. J. Trask, J. L. Rosenfeld, J. B. Thompson, Jr.

Un-named Schist-Amphibolite Unit

Rusty-weathering, fine-grained black carbonaceous phyllite and schist with thin black quartz interbeds; medium-grained porphyritic black amphibolite; minor gray mica-schist with garnets; distinctive thin coticule layers.

Northfield

Gray, commonly crinkled, mica schist with conspicuous almandine porphyroblasts; thin impure quartzite interbeds, minor impure marble.

Waits River

Dark gray to gray mica schist and calcareous mica schist with abundant interbeds of punky brown-weathering impure marble; thin interbeds of impure quartzite toward eastern contact.

Missisquoi

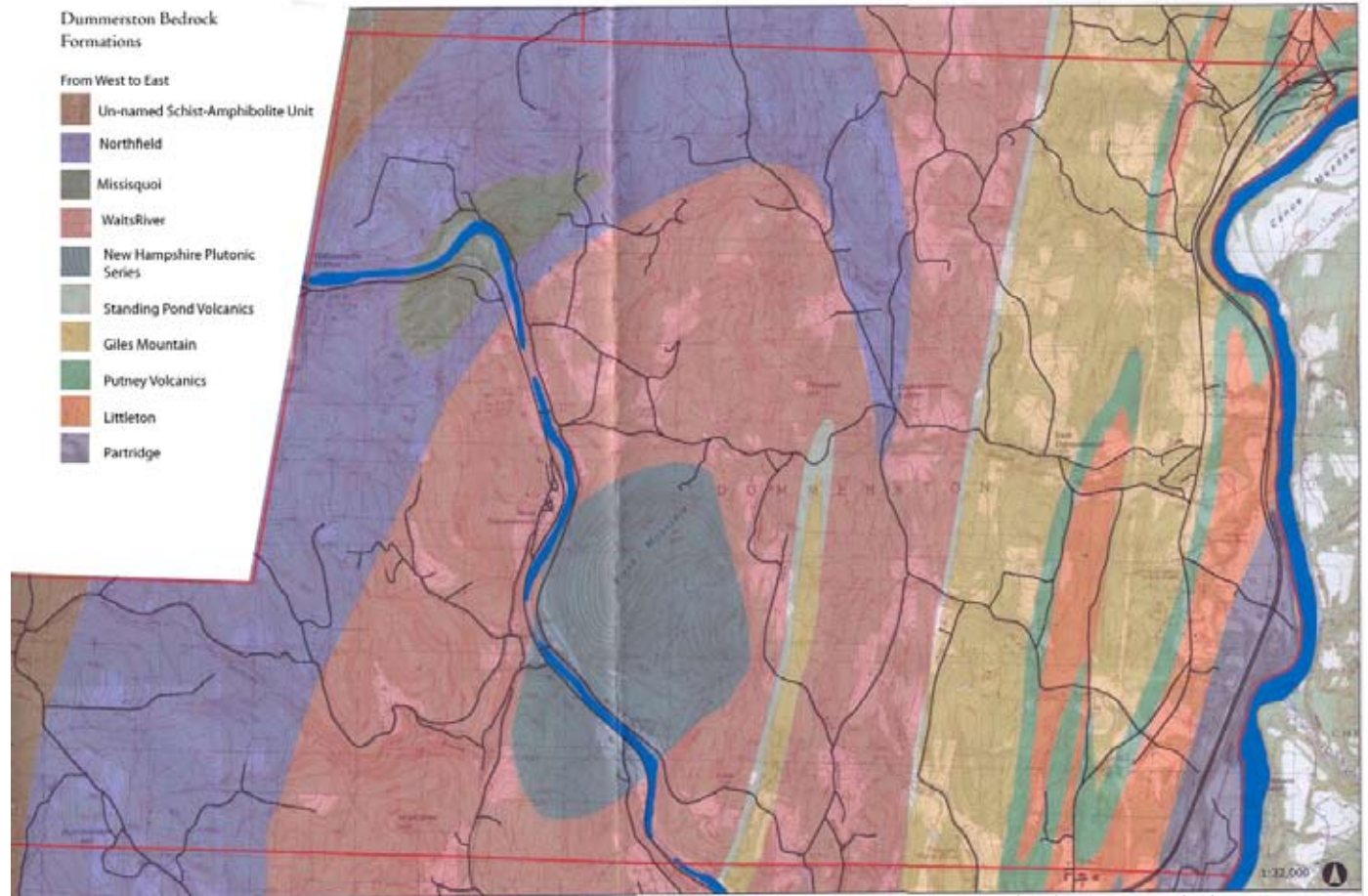
Barnard Volcanic Member, dark gray to black amphibolite with feldspar megacrysts; gray to light gray quartzofeldspathic gneiss, schist; granulite, and layered gneiss with interlayers of amphibolite; minor black, rusty-weathering mica schist.

New Hampshire Plutonic Series

Medium- to coarse-grained, light gray to gray granite, granodiorite, and quartz diorite; some bodies weakly to moderately foliated.

Standing Pond Volcanics

Black medium-grained amphibolite and epidote amphibolite; very coarse-grained garnet-hornblende fasciculitic schist; minor impure quartzite, coticule, and schist; dark gray to gray-green, massive



Map by Claire Dacey and John Warren, 2005

sive plagioclase-biotite-quartz and plagioclase-biotite-hornblende-quartz-carbonate granulite and gneiss.

Giles Mountain

Interbedded light gray to tan micaceous and feldspathic quartzite and rare, punky brown-weathering impure marble.

Putney Volcanics

Buff to light-brownish weathering feldspathic granulite and feldspathic phyllite; light greenish gray chlorite phyllite; greenstone; interbedded gray slate or phyllite.

Littleton

Gray to dark gray slate, phyllite and mica schist with interbedded quartzite; biotite, garnet, and staurolite porphyroblasts common at the appropriate metamorphic grades.

Partridge

Rusty-brown weathering sulfidic mica schist; gray quartz-mica schist; biotite, garnet and staurolite porphyroblasts present at appropriate metamorphic grades; lesser amounts of amphibolite and quartz-feldspar-biotite gneiss and granulite.